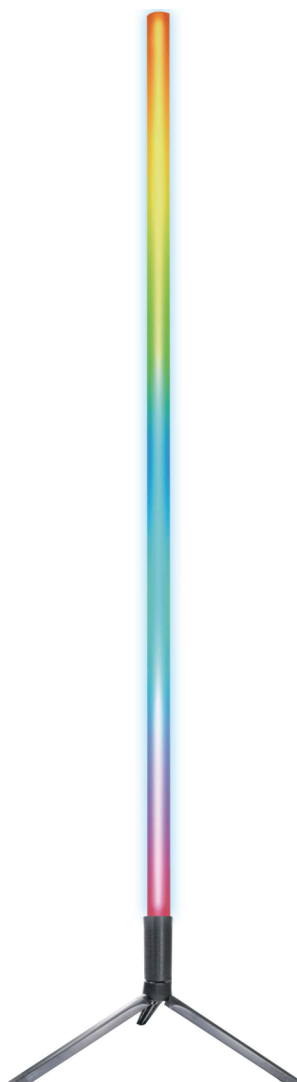




User Manual

Denver SCL-155



FR

Cet appareil
est recyclable

À DÉPOSER
EN MAGASIN



À DÉPOSER
EN DÉCHÈTERIE



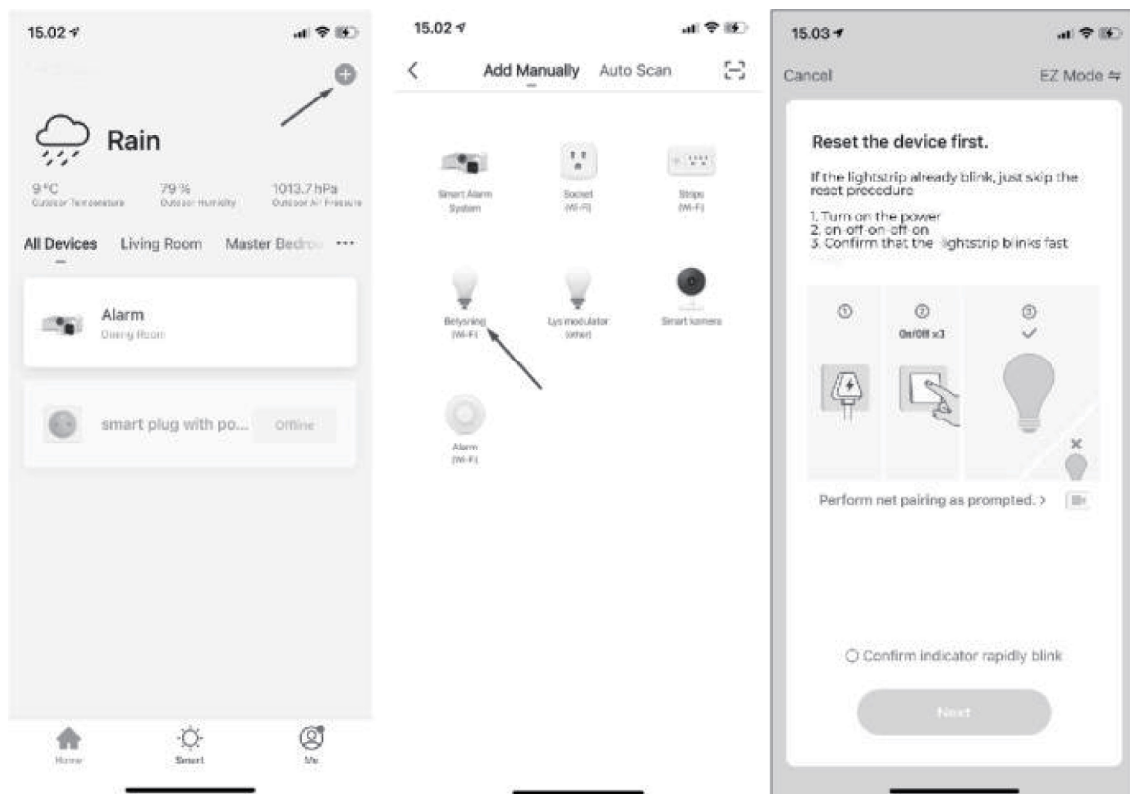
OU

Points de collecte sur www.quefairedemesdechets.fr
Privilégiez la réparation ou le don de votre appareil !



facebook.com/denver.eu

Tuya APP



1



2



3

Lighting product instructions for use

Universal Edition Tuya App

Safety information

Please read the safety instructions carefully before using the product for the first time and keep the instructions for future reference.

1. This product is not a toy. Keep it out of reach of children.
2. Keep product out of the reach of children and pets to avoid chewing and swallowing.
3. Product operating and storage temperature is from 0 degree Celsius to 40 degree Celsius. Under and over this temperature might affect the function.
4. Never open the product. Touching the inside electrics can cause electric shock. Repairs or service should only be performed by qualified personnel.
5. This product is for dry indoor environment only.
6. Do not expose to heat, water, moisture, direct sunlight!
7. Only charge with the original adapter supplied with this product!
8. Only use with the attached accessories. Using non original accessories can make the product work abnormal.
9. The direct plug-in adapter is used as disconnect device, the disconnect device shall remain readily operable. So, make sure there is space around the power outlet for easy access. Do not expose to heat, water, moisture, direct sunlight!

Preparation for use

1. Power on the lamp while ensuring that your smartphone is connected to the 2.4 GHz Wi-Fi network;
2. Download and open the app.
3. Search for "Denver Smart Home" in the App Store or scan the QR code below or on the package to download and install the app.
4. Tap the "Register" button to register if you download it for the first time. If you already have an account, tap the "Login" button.

Device Network configuration

1. Open the Denver Smart Home app and access the "Devices" page. Tap the "+" mark in the upper right corner of the page.
2. Select "Lighting devices" on the device list page.
3. Two configuration modes are available for connection: EZ mode and AP mode.

1) EZ Mode

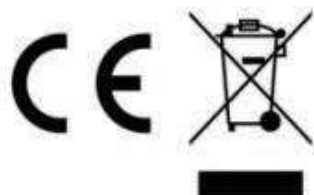
Ensure the light flashes quickly(twice a second).This indicates that the lightstrip is in configuration mode.

If it is not blinking,then push and hold the reset button until it turns off.Then let go and it goes into configuration mode..Tap the"Confirm light blinks rapidly"button on the“Add Device”page to start connection.

Manufacturer's name or trade mark, commercial registration number and address	Shenzhen Cenwell Technology Co., Ltd. 2F-3F Building C, Shengshun Industrial Park, No. 142 Junxin Road, Guanlan Town, Longhua New District, Shenzhen, China 91440300589199816R
Model identifier	Denver SCL-155 CW1201500EU
Input voltage	220-240VAC
Input AC frequency	50/60Hz
Output voltage	12VDC
Output current	1.5A
Output power	Maximun 18W
Average active efficiency	75%
Efficiency at low load (25%)	75%
No-load power consumption	≤0.5W

Please notice - All products are subject to change without any notice.
We take reservations for errors and omissions in the manual.

ALL RIGHTS RESERVED, COPYRIGHT DENVER A/S



Electric and electronic equipment contains materials, components and substances that can be hazardous to your health and the environment, if the waste material (discarded electric and electronic equipment) is not handled correctly.

Electric and electronic equipment is marked with the crossed out trash can symbol, seen above. This symbol signifies that electric and electronic equipment should not be disposed of with other household waste, but should be disposed of separately.

All cities have established collection points, where electric and electronic equipment can either be submitted free of charge at recycling stations and other collection sites, or be collected from the households. Additional information is available at the technical department of your city.

Hereby, Denver A/S declares that the radio equipment type SCL-155 is in compliance with Directive 2014/53/EU. The full text of the EU declaration of conformity is available at the following internet address: denver.eu and then click the search ICON on topline of website. Write model number: SCL-155. Now enter product page, and RED directive is found under downloads/other downloads.

Operating Frequency Range: 2.412~2.484GHz

Max Output Power: 18dBm

DENVER A/S
Omega 5A, Soeflen
DK-8382 Hinnerup
Denmark
www.facebook.com/denver.eu